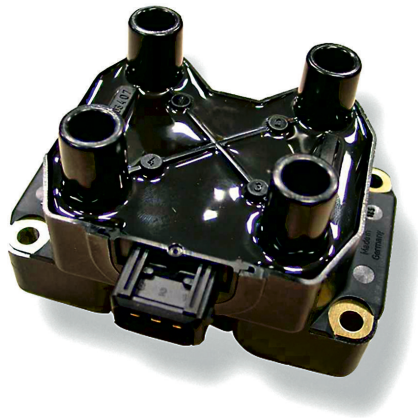


Double Fire Coil 2x2

www.bosch-motorsport.com



BOSCH
Invented for life



- ▶ Max. 35 kV
- ▶ Max. 70 mJ
- ▶ Max. 1.9 kV/μs
- ▶ For 4 cyl. engines

This dual spark ignition coil is designed for low-cost applications in 4-cylinder engines. The Double Fire Coil 2x2 has no integrated transistor and requires an ECU with internal ignition power stages.

The advantage of this coil is that the ECU needs only two internal ignition power stages for supplying a 4-cylinder engine.

The Double Fire Coil 2x2 benefits from series production ensuring robustness and low cost.

Application

Spark energy	≤ 70 mJ
Primary current	≤ 8.0 A
Operating temperature range at outer core	-20 to 120°C
Storage temperature range	-40 to 100°C
Max. vibration	≤ 200 m/s ² at 5 to 250 Hz

Technical Specifications

Mechanical Data

Weight	916 g
Mounting	Screw fastening

Electrical Data

Primary resistance with wire	500 mΩ
Secondary resistance	13.3 kΩ
High voltage rise time	≤ 1.9 kV/μs
Max. high voltage at 1 MΩ 10 pF	≤ 35 kV
Spark current	≤ 70 mA
Spark duration at 1 kV 1 MΩ	≤ 2.2 ms

Characteristic

Measured with power stage	IGBT IRG4BC40S (U _{ce} =600 V)
---------------------------	---

Connectors and Wires

Connector	Bosch Jetronic
Mating connector 3-pole Jetronic	D 261 205 289-01
Pin 1	Coil 2 ECU Ignition Power Stage
Pin 2	U _{batt}
Pin 3	Coil 1 ECU Ignition Power Stage

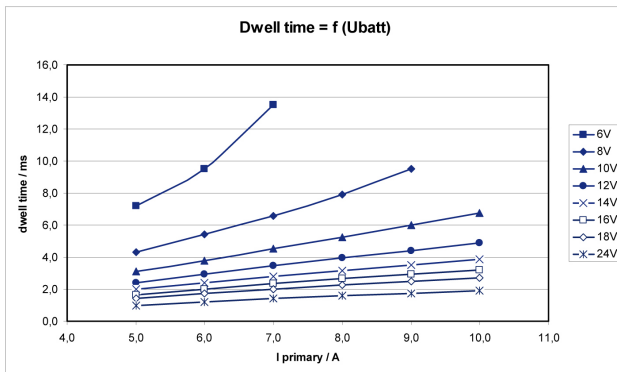
Various motorsport and automotive connectors are available on request.

Please specify the required wire length with your order.

Characteristic dwell times [ms]

U _{batt}	I _{primary}					
	5.0A	6.0A	7.0A	8.0A	9.0A	10A
6V	6.9	9.3	13.1	22.2		
8V	4.2	5.3	6.7	8.1	9.8	12.0
10V	3.0	3.8	4.6	5.4	6.2	7.0
12V	2.4	2.9	3.5	4.1	4.6	5.1
14V	1.9	2.4	2.8	3.3	3.6	4.0
16V	1.6	2.0	2.4	2.7	3.0	3.3
20V	1.2	1.5	1.8	2.0	2.3	2.5
22V	1.1	1.3	1.6	1.8	2.0	2.2
24V	1.0	1.2	1.4	1.6	1.8	2.0

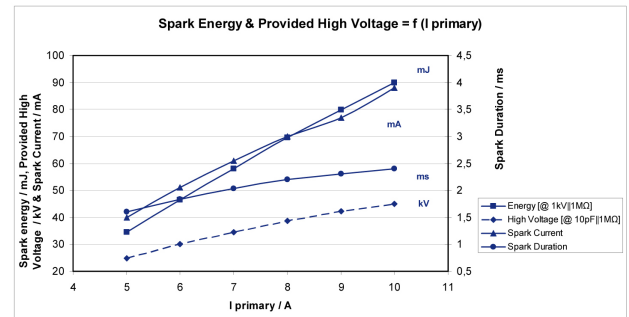
Measured values are without loom resistance. Loom resistance must be less than the primary resistance. The needed dwell time is to be verified through current measurement



Dwell time

Spark energy and provided high voltage

I _{prim.}	Spark energy	-duration	-current	Hi voltage
5 A	34.5 mJ	1.6 ms	40 mA	24.9 kV
6 A	46.5 mJ	1.83 ms	51 mA	30 kV
7 A	58.0 mJ	2.03 ms	61 mA	34.5 kV
8 A	69.6 mJ	2.2 ms	70 mA	38.6 kV
9 A	79.9 mJ	2.31 ms	77 mA	42.2 kV
10 A	89.9 mJ	2.4 ms	88 mA	45 kV



Spark energy

Installation Notes

The coil can be mounted directly on the engine.

Ignition wires are needed to connect the coil with the spark plug, please pay attention that the spark plugs are connected in the correct ignition firing order. Numbers in the offer drawing or on the ignition coil are not the firing order but the cylinders' order.

The Double Fire Coil 2x2 has no integrated transistor and requires an ECU with two internal ignition power stages, e.g. IGBT or BIP.

For technical reasons the values of the coils may vary.

Please regard the specified limit values.

Please find further application hints in the offer drawing at our home-page.

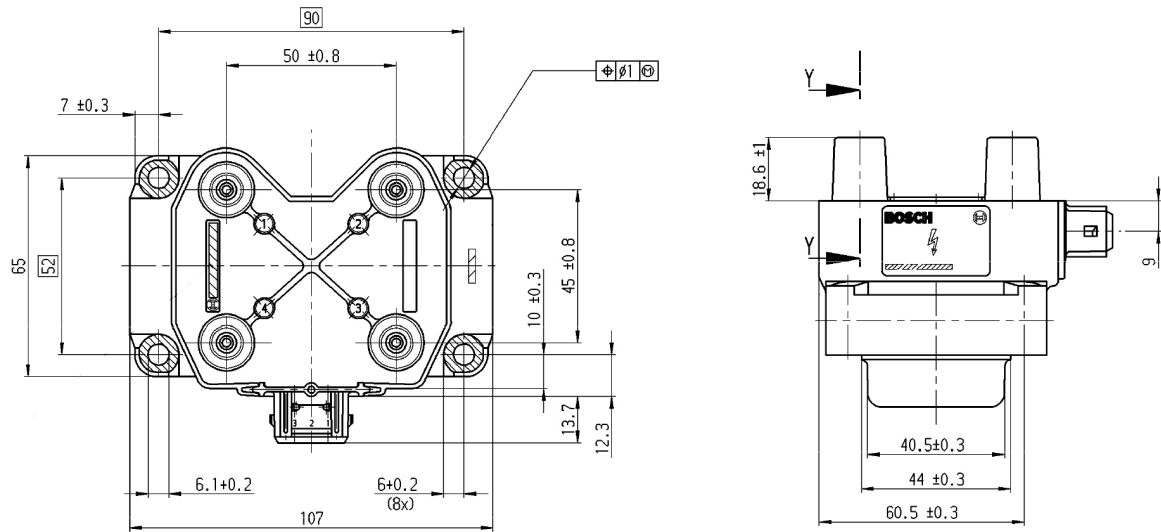
In case of ignition-caused malfunctions, please use screened sensor wires.

Ordering Information

Double Fire Coil 2x2

Order number **0 221 503 407**

Dimensions



Represented by:

Europe:
 Bosch Engineering GmbH
 Motorsport
 Robert-Bosch-Allee 1
 74232 Abstatt
 Germany
 Tel.: +49 7062 911 79101
 Fax: +49 7062 911 79104
 motorsport@bosch.com
 www.bosch-motorsport.de

North America:
 Bosch Engineering North America
 Motorsport
 38000 Hills Tech Drive
 Farmington Hills, MI 48331-3417
 United States of America
 Tel.: +1 248 876 2977
 Fax: +1 248 876 7373
 motorsport@bosch.com
 www.bosch-motorsport.com

Latin America:
 Robert Bosch Ltda
 Motorsport
 Av Juscelino Kubitschek de
 Oliveira 11800
 Zip code 81460-900
 Curitiba - Parana
 Brasilia
 Tel.: +55 41 3341 2057
 Fax: +55 41 3341 2779

Asia-Pacific:
 Bosch Engineering Japan K.K.
 Motorsport
 18F Queen's Tower C, 2-3-5 Minato Mirai
 Nishi-ku, Yokohama-shi
 Kanagawa 220-6218
 Japan
 Tel.: +81 45 650 5610
 Fax: +81 45 650 5611
 www.bosch-motorsport.jp

Australia, New Zealand and South Africa:
 Robert Bosch Pty. Ltd
 Motorsport
 1555 Centre Road
 Clayton, Victoria, 3168
 Australia
 Tel.: +61 (3) 9541 3901
 motor.sport@au.bosch.com